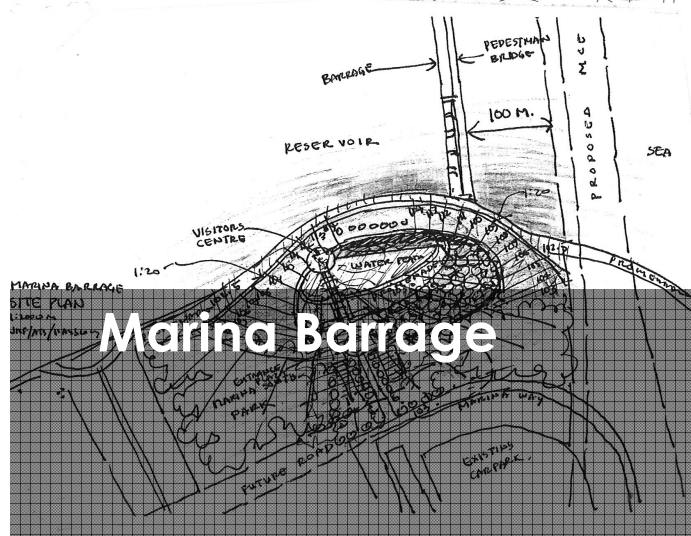
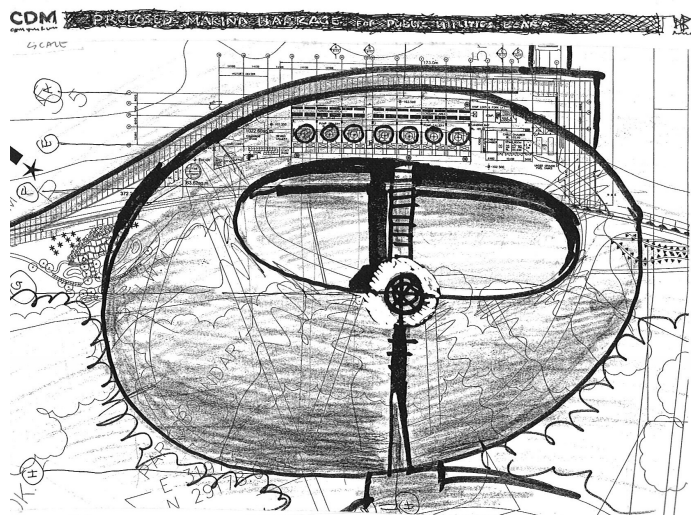
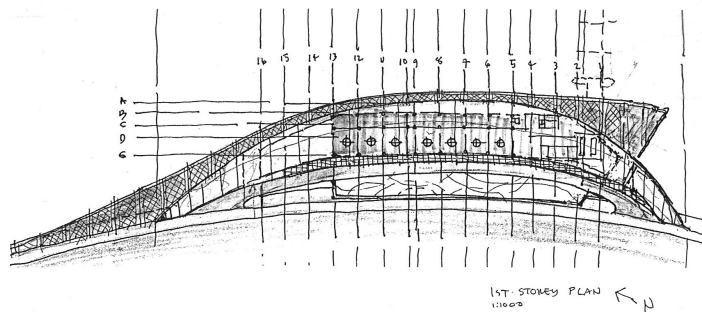
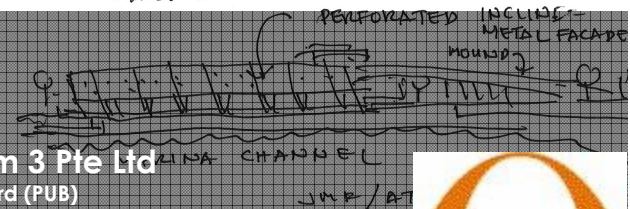
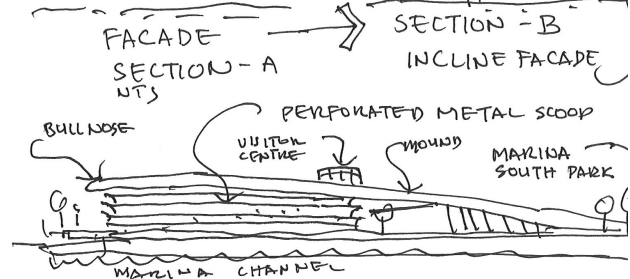
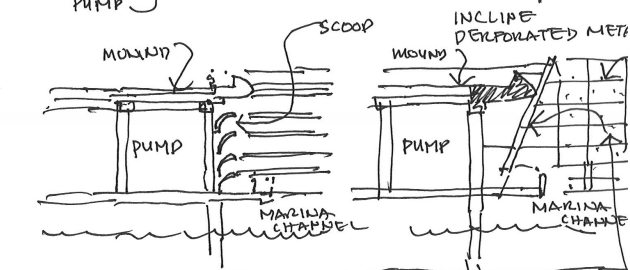
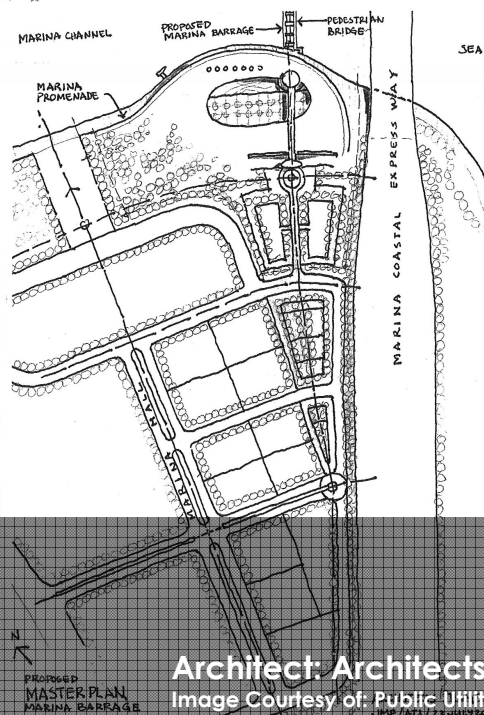
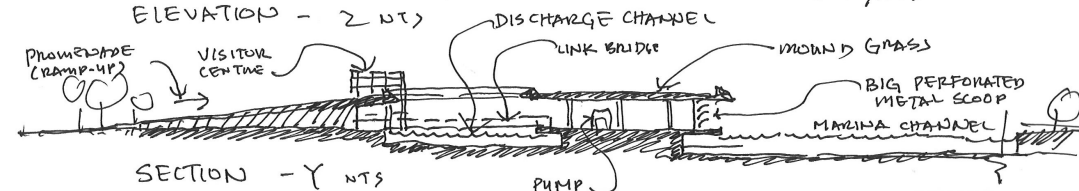
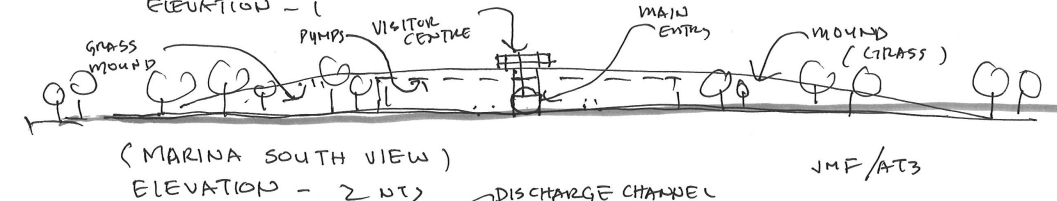
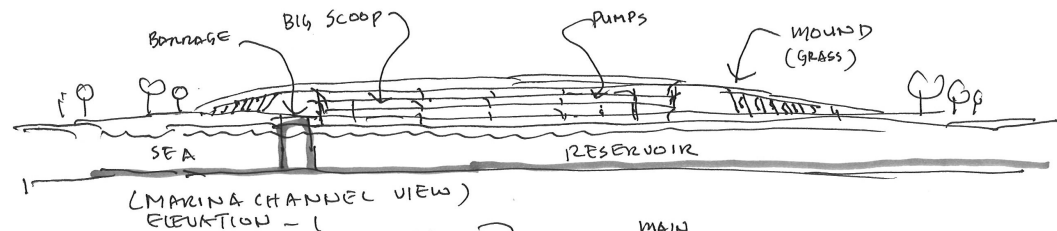


10 Adopts Integrated Design Process

A sustainable built environment is a product of a collaborative framework known as the integrated design process (IDP). The IDP seeks to bridge the gap between the various stakeholders across all phases of the design-construction process, driven by a singular focus on targets and performance.



Marina Barrage



Architect: Architects Team 3 Pte Ltd
Image Courtesy of: Public Utilities Board (PUB)





Pinnacle@Duxton

Architect: ARC Studio Architecture + Urbanism in collaboration with
RSP Architects Planners & Engineers (Pte) Ltd

Image Courtesy of: ARC Studio Architecture + Urbanism and RSP Architects Planners & Engineers (Pte) Ltd

